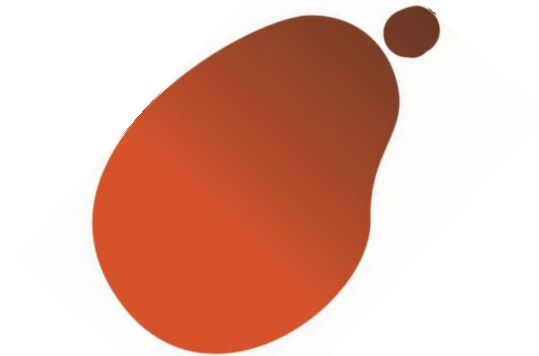
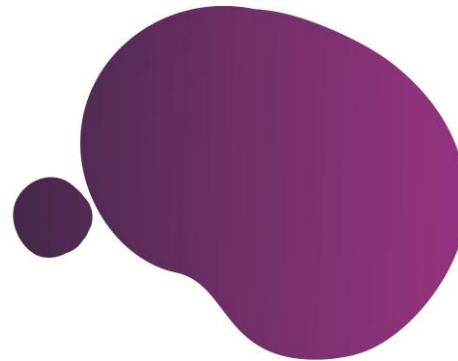


# Diagnostic Tools: Our Journey



Premiered at the OD in The NHS II Conference, 7 July 2014



# Our Vision



What will be different in the world of OD from this work stream?

2014

- To inform OD professionals of available diagnostic tools to improve practice (Portfolio)
- To provide a guide to the uses of and effectiveness of identified tools (Matrix)



# Where do we take this work?



2014

- Set up as a matrix rather than a list
- Make it available to all practitioners via DoOD on line.

## Longer Term

- Toolkit idea / Trip Advisor type comments based on individual's experiences from the practitioner perspective
- Create case studies e.g. 'How I use diagnostic X to solve problem Y'
- Invite a user perspective (who has had the diagnostic done to them) but there should be a clear differentiation between the two.

## In 'Other Places' or as an ongoing feature?

- 'What's in your OD toolkit?' feature of OD specialists who talk about particular diagnostics and other 'valuable tools' that they tend to trust and rely on in their OD work. This may help bring the rather sterile list format to life a bit. It could be done as an online thread or feature with opportunities to comment and informal networks of specialisms to develop
- Write up a case study and publish it in HSJ, for example.

# Our Journey

- Its been a piece of work that's taken time to clarify but it is getting there
- Different people involved at different stages
- Special thanks to Paula & Ian at Nottingham University Hospital



Tool	Source and further info	Uses	Comments
Advisory Panel	Advisory Panel (AP) - a group of experts in the field of diagnostics	Change management Service improvement	
Local Review	Local Review (LR) - a group of experts in the field of diagnostics	Identifying safety issues	
Local Improvement	Local Improvement (LI) - a group of experts in the field of diagnostics	Quality Improvement	Selection of a site and from a number of people who were able to identify the biggest one improvement from another
Local Review/Improvement	Local Review/Improvement (LRI) - a group of experts in the field of diagnostics	Quality Improvement	
Local Review/Improvement	Local Review/Improvement (LRI) - a group of experts in the field of diagnostics	Quality Improvement	
Local Review/Improvement	Local Review/Improvement (LRI) - a group of experts in the field of diagnostics	Quality Improvement	
Local Review/Improvement	Local Review/Improvement (LRI) - a group of experts in the field of diagnostics	Quality Improvement	

